

**To arrange a viewing contact us
today on 01268 777400**



Goldfinch Lane, Benfleet Asking price £725,000

Aspire Estate Agents are delighted to introduce this four bedroom detached family home on Goldfinch Lane, one of Thundersley's most prestigious roads. Thoughtfully arranged for everyday living and easy entertaining, it blends generous, light filled rooms with a flexible layout, ideal for working from home, welcoming guests, or simply relaxing indoors and out. A welcoming hallway opens to a bright lounge with doors to the garden, a separate dining room for family meals, and a well planned fitted kitchen with adjoining utility; a dedicated study and ground floor WC add everyday practicality. Upstairs, four well proportioned bedrooms include a private ensuite to the main, served by a modern family bathroom.

Outside, the west facing garden begins with a paved terrace for dining and barbecues, leading to a neat lawn screened by mature planting for privacy and calm. There's handy access to the garage from the garden, plus a block paved driveway and double garage at the front. The location is a standout: a quiet, established setting within catchment for Thundersley Primary School and The Deanes, swift links to the A127, a short drive to Rayleigh Station for London connections, regular bus services nearby, and Thundersley Common within walking distance, perfect for weekend strolls.

www.aspireestateagents.co.uk

Ground Floor

Entrance Hall

Lounge- 17'10" x 12' (5.44m x 3.66m)

Dining Room- 14'5" x 10'8" (4.39m x 3.25m)

Kitchen/Breakfast Room- 12'4" x 9'11" (3.76m x 3.02m)

Utility Room- 6'7" x 5'11" (2.01m x 1.80m)

Study- 9'1" x 7'11" (2.77m x 2.41m)

WC

First Floor

Landing

Master Bedroom- 13'6" x 11'11" (4.11m x 3.63m)

Ensuite

Bedroom Two- 12'8" x 10'8" (3.86m x 3.25m)

Bedroom Three- 11'1" x 9'11" (3.38m x 3.02m)

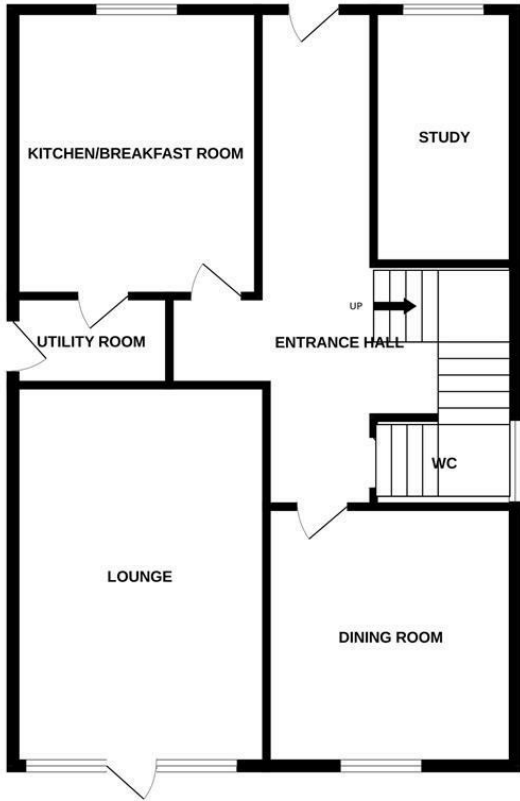
Bedroom Four- 12'9" x 9' (3.89m x 2.74m)

Family Bathroom

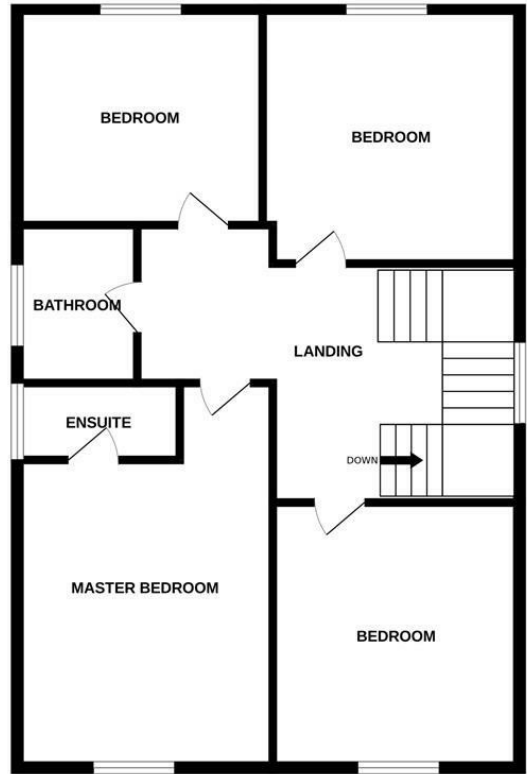
Garage

Rear Garden- 120ft Approx.

GROUND FLOOR

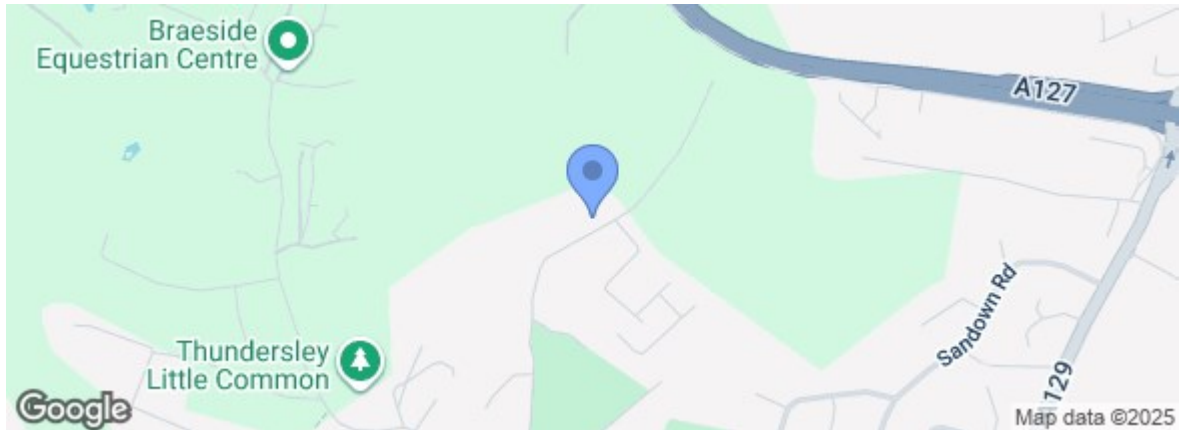


1ST FLOOR



Whilst every attempt has been made to ensure the accuracy of the floorplan contained here, measurements of doors, windows, rooms and any other items are approximate and no responsibility is taken for any error, omission or mis-statement. This plan is for illustrative purposes only and should be used as such by any prospective purchaser. The services, systems and appliances shown have not been tested and no guarantee as to their operability or efficiency can be given.
Made with Metropix ©2025

| Energy Efficiency Rating | |
|---|---------|
| | Current |
| Very energy efficient - lower running costs | |
| (92 plus) A | |
| (81-91) B | |
| (69-80) C | 79 |
| (55-68) D | |
| (39-54) E | |
| (21-38) F | |
| (1-20) G | |
| Not energy efficient - higher running costs | |
| England & Wales EU Directive 2002/91/EC | |
| Environmental Impact (CO ₂) Rating | |
| | Current |
| Very environmentally friendly - lower CO ₂ emissions | |
| (92 plus) A | |
| (81-91) B | |
| (69-80) C | |
| (55-68) D | |
| (39-54) E | |
| (21-38) F | |
| (1-20) G | |
| Not environmentally friendly - higher CO ₂ emissions | |
| England & Wales EU Directive 2002/91/EC | |



Under the Property Misdescriptions Act 1991 we make every effort to ensure our sales details are accurate but they are a general outline and do not constitute any part of an offer or contract. Any services, equipment and fittings have not been tested and no warranty can be given as to their condition. We strongly recommend that all the information provided be verified by your advisors and in particular, measurements required for a specific purpose such as fitted furniture or carpets. Please tell us if you have any problems and members of our branches will help either over the phone or in person. A copy of our complaints procedure is available on request. The details are issued on the strict understanding that any negotiations in respect of the property named herein are conducted through Aspire Estate Agents.